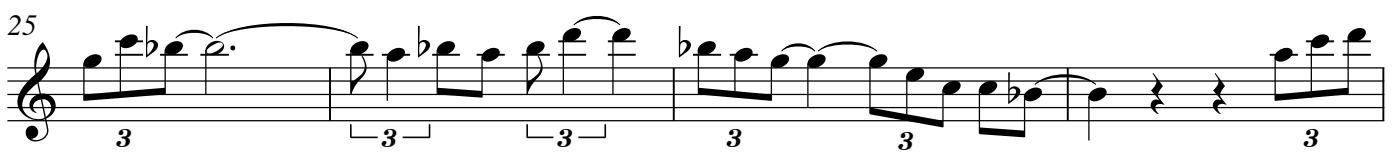
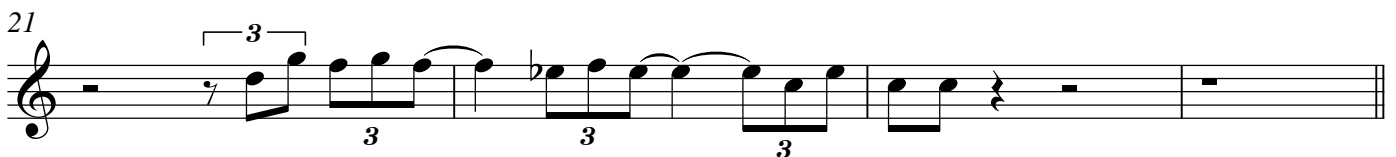
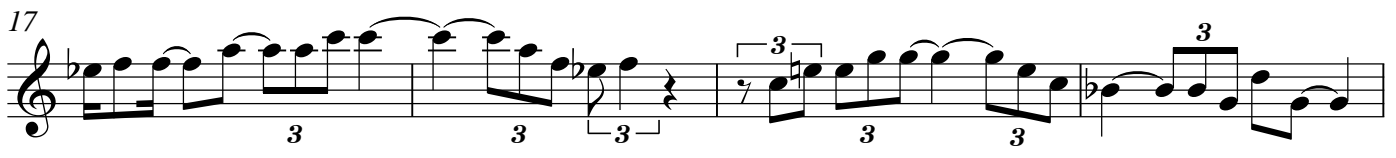
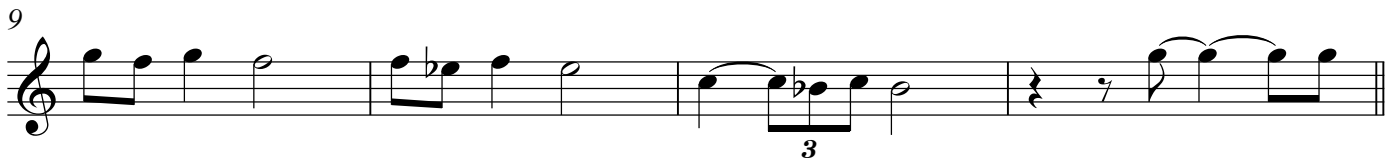
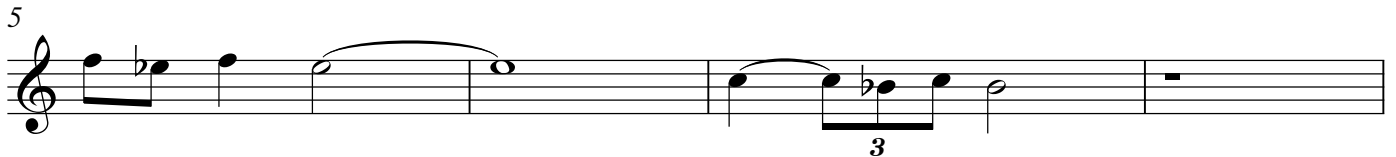


Village Blues

John Coltrane's solo from the album *Coltrane Jazz*

Transcription by Andrew Frankhouse



2

Musical score for a piano piece, measures 37-47. The score is written in treble clef with a key signature of one flat (B-flat). The notation includes various rhythmic figures and articulations:

- Measure 37: A series of eighth notes with accents, followed by a triplet of eighth notes.
- Measure 38: A triplet of eighth notes, followed by a quarter note and a half note.
- Measure 39: A triplet of eighth notes, followed by a quarter note and a half note.
- Measure 40: A triplet of eighth notes, followed by a quarter note and a half note.
- Measure 41: A triplet of eighth notes, followed by a quarter note and a half note. An asterisk (*) is placed above the first eighth note of the triplet.
- Measure 42: A triplet of eighth notes, followed by a quarter note and a half note.
- Measure 43: A triplet of eighth notes, followed by a quarter note and a half note.
- Measure 44: A triplet of eighth notes, followed by a quarter note and a half note.
- Measure 45: A triplet of eighth notes, followed by a quarter note and a half note.
- Measure 46: A triplet of eighth notes, followed by a quarter note and a half note.
- Measure 47: A triplet of eighth notes, followed by a quarter note and a half note. The piece concludes with the instruction "Piano..." and a double bar line.

* Sibelius refused to notate this tuplet correctly.
It is 7:3, but would be better represented by a quarter followed by eighths.